



**STORMY[®]
KROMER**

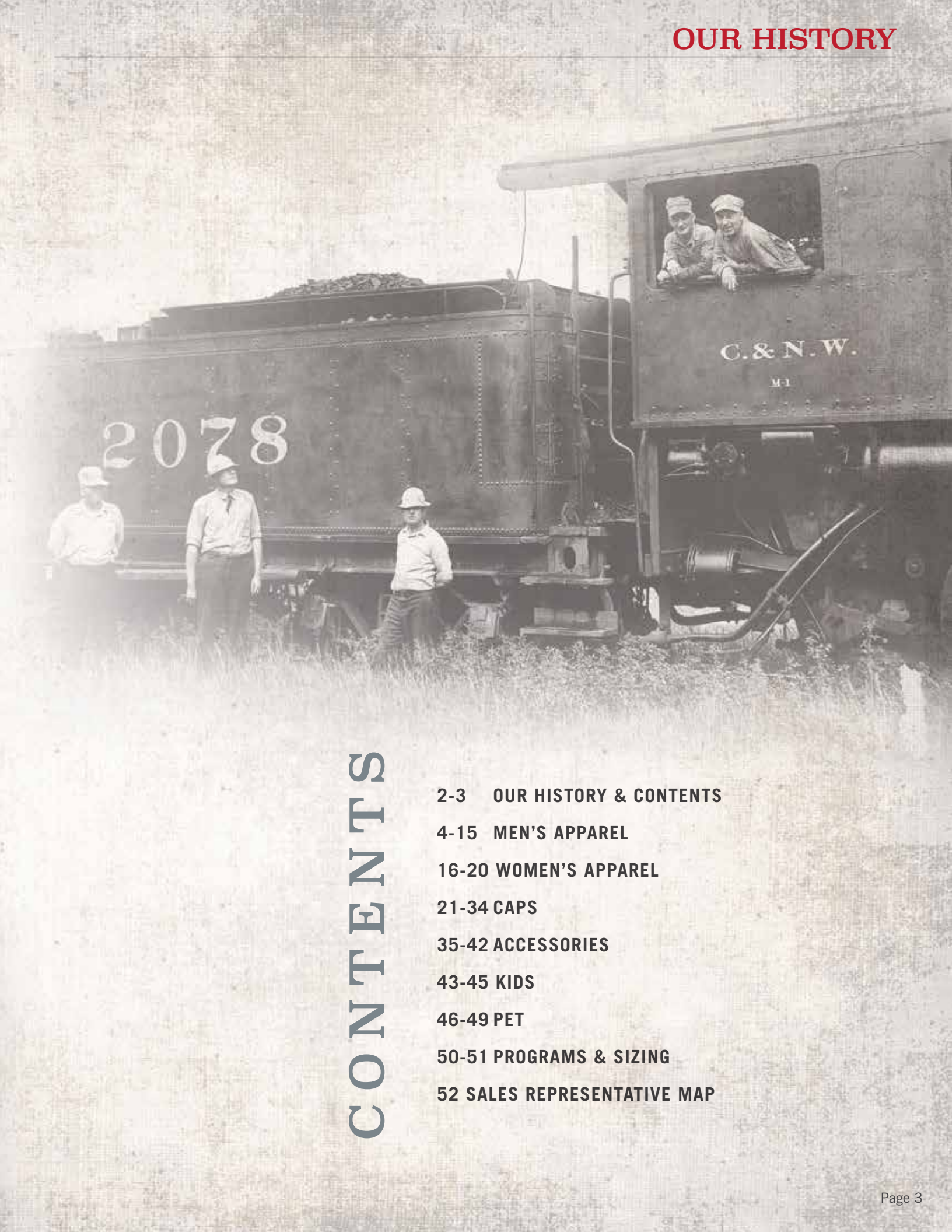
20 FALL & WINTER
24 DEALER CATALOG



STORMY KROMER

In 1903, George “Stormy” Kromer — a semi-pro baseball player and railroad engineer — asked his wife, Ida, for a solution to the freezing prairie wind stealing his cap as he worked on his locomotive. Her solution was to hand-stitch the now-famous earband on one of Stormy’s old baseball caps. The hat stayed on. His head stayed warm. And a legend was born.

Today everything, from our materials to our method, is as authentic as that first cap. Our family-run factory in the rugged and remote Upper Peninsula of Michigan has been crafting quality fabric products for three generations now. We’re proud to continue George and Ida’s legacy of innovation and style. Although our company has grown and our designs continue to evolve, some things will never change — like our commitment to quality, our neighborly customer service, and our genuine belief in the value of a really great cap.



CONTENTS

2-3 OUR HISTORY & CONTENTS

4-15 MEN'S APPAREL

16-20 WOMEN'S APPAREL

21-34 CAPS

35-42 ACCESSORIES

43-45 KIDS

46-49 PET

50-51 PROGRAMS & SIZING

52 SALES REPRESENTATIVE MAP



ISLE ROYALE COLLECTION

Welcome to Isle Royale – Our newest collection brings together Stormy Kromer’s classic designs and American Woolen Company’s premium wool fabrics to create a collection of headwear and apparel that provides warmth, timeless style, and quality craftsmanship that we tip our hat to. The print and colors in the Isle Royale Collection were inspired by and reflect the island’s rugged nature and natural beauty.

Based in Stafford Springs Connecticut, the American Woolen Company is steeped in a rich history of American textile production making it a natural fit. Their Melton Wool – used in this collection – offers the historic qualities of wool such as warmth and durability while modernizing the fabric with a loftier and more fleece-like look and feel.

Weaving our legacy styles with this modern wool, the Isle Royale Collection will be the items that folks reach for in their closets for years to come.

**STORMY
KROMER**

&

**AMERICAN
WOOLEN**

C O M P A N Y



MENS



THE DOUBLE MACKINAW COAT

DETAILS

- 26 oz. 100% wool made in Connecticut
- Additional fabric, half-body overlay
- 6 pockets
- 5 button front
- Black-coppered snaps
- Unlined
- Leather branded label
- Cut and sewn in the USA

Style 56400 | Sizes M-3XL
Suggested Retail **\$500-\$510**



AMERICAN WOOLEN COMPANY



901 Charcoal



305 Red/Black Plaid

NEW

THE MACKINAW COAT

DETAILS

- 26 oz. 100% wool made in Connecticut
- 6 pockets
- 5 button front
- Unlined
- Leather branded label
- Cut and sewn in the USA

Style 52150 | Sizes M-3XL, LT-3XL
Suggested Retail **\$375-\$385**



AMERICAN WOOLEN COMPANY

73E North Star



305 Red/Black Plaid



415 Olive



901 Charcoal

THE IRONWOOD JACKET

DETAILS

- 22 oz. 85/15 wool/nylon blend (999)
- 23 oz. 75/25 wool/nylon blend made in Connecticut (66C)
- Antique brass metal zipper
- Welt side pockets
- Unlined
- Cut and sewn in the USA

Style 52450 | Sizes M-3XL
Suggested Retail **\$200-\$210**



AMERICAN WOOLEN COMPANY



66C Marbled Navy



999 Black

THE SQUALL COAT

DETAILS

- 10 oz. paraffin-treated 100% cotton duck (80Z)
- 12 oz. waxed 100% cotton canvas (505)
- Quilted nylon lining
- Blended wool rib knit cuffs
- 2 large side inseam pockets
- 2 pockets with snap closure
- Durable nylon 5 gauge zipper
- Storm flap with snap closure
- Cut and sewn in the USA

Style 56200 | Sizes M-3XL
Suggested Retail **\$400-\$410**



80Z
Dark Oak

505
Treestand

THE BOUNDARY JACKET

DETAILS

- 22 oz. 60/40 wool/recycled polymer
- 50/40/10 wool/poly/recycled polymers (89T)
- Double-sided woven fabric with fleece backing
- Inseam side pockets
- Coil zip
- Cut and sewn in the USA

Style 52490 | Sizes M-3XL
Suggested Retail **\$200-\$210**



89T
Blue Slate

69B
Indigo Plaid

42P
Evergreen

THE YARD VEST

DETAILS

- 22-24 oz. 85/15 or 80/20 wool/nylon blend
- 50/25/25 wool/poly/nylon (84A)
- Wool blend knit collar
- Black coil zipper
- Bias-cut side pockets
- Unlined
- Cut and sewn in the USA

Style 56410 | Sizes M-3XL
Suggested Retail **\$115-\$125**



453
White Pine

99G
Carbon

84A
Ottawa

161
Blaze Orange

NEW

THE CREW VEST

DETAILS

- 10 oz. paraffin-treated 100% cotton duck (80Z)
- 12 oz. waxed 100% cotton canvas (505)
- Quilted nylon lining
- Blended wool rib knit collar
- 2 large pockets
- Durable nylon 5 gauge zipper
- Cut and sewn in the USA

Style 56210 | Sizes M-3XL
Suggested Retail **\$225-\$235**



505
Treestand



80Z
Dark Oak

THE STEELHEAD WOOL VEST

DETAILS

- 22 oz. 85/15 wool/nylon blend
- 100% polyester fleece lining at collar and back neck
- 6 large pockets
- Antique brass zipper and hardware
- Cut and sewn in the USA

Style 53420 | Sizes M-3XL
Suggested Retail **\$180-\$190**



415
Olive



999
Black

NEW

THE IRONWOOD VEST

NEW COLOR

DETAILS

- 22-24 oz. 85/15 or 80/20 wool/nylon blend
- 22 oz. 75/25 wool/nylon (73H)
- 22 oz. 80/20 wool/recycled yarns (78N)
- Antique brass metal zipper front
- Welt side pockets
- Leather branded label
- Cut and sewn in the USA

Style 52140 | Sizes M-3XL, LT-3XLT
Suggested Retail **\$140-\$150**

Style 52140-73H | Sizes M-3XL
Suggested Retail **\$190-\$200**



73H
Forest Floor
Isle Royale Collection



90R
Adirondack



70G
Navy Heather



901
Charcoal



78N
Century

BOUNDARY VEST

DETAILS

- 22 oz. 60/40 wool/recycled polymer
- 50/40/10 wool/poly/recycled polymers (89T)
- Double-sided woven fabric with fleece backing
- Inseam side pockets
- Coil zip
- Cut and sewn in the USA

Style 53400 | Sizes M-3XL

Suggested Retail **\$150-\$160**



89T
Blue Slate

42P
Evergreen

69B
Indigo Plaid

THE SK BUTTON VEST

DETAILS

- 26 oz. 100% wool made in Connecticut
- 5 pockets
- 4 button front
- Unlined
- Leather branded label
- Cut and sewn in the USA

Style 52510 | Sizes M-3XL, LT-3XLT

Suggested Retail **\$200-\$210**



AMERICAN
WOOLEN
COMPANY



73E
North Star

305
Red/Black Plaid

901
Charcoal

415
Olive

999
Black

THE WAXED BUTTON VEST

DETAILS

- 10 oz. paraffin-treated 100% cotton duck
- 5 pockets
- 4 button front
- 100% cotton flannel lining
- Cut and sewn in the USA

Style 52530 | Sizes M-3XL

Suggested Retail **\$200-\$210**



80Z
Dark Oak

75S
Sand

THE FLANNEL SHIRT

DETAILS

- 6.5 oz. 100% cotton flannel
- Button-thru chest pocket
- Imported

Style 52470 | Sizes S-3XL
Suggested Retail **\$90-\$100**



74R
Buckthorn

55Y
Rubbed Sage

69C
Campfire

305
Red/Black Plaid

THE WOOL SHIRT

DETAILS

- 14 oz. 60% wool, 30% polyester, 10% recycled polymers, yarn-dyed plaid twill (89P, 88B, 59C)
- 14 oz. 50% wool, 40% polyester, 10% recycled polymers, yarn-dyed plaid jacquard (476)
- 2 button-thru chest pockets
- Machine washable
- Imported

Style 53220 | Sizes S-3XL
Suggested Retail **\$125-\$135**



59C
Storm

88B
Cedar

476
Black Olive

89P
Slate Plaid

THE CAMP SHIRT JACK

DETAILS

- 6.5 oz. 100% cotton flannel
- 100% polyester sherpa lining
- 2 snap-closure chest pockets
- 2 inseam hip pockets
- Metal snap front
- Imported

Style 52460 | Sizes S-3XL
Suggested Retail **\$150-\$160**



835
Earth

89S
Bog

305
Red/Black Plaid

THE COMPASS SHIRT JACK

DETAILS

- 22 oz. 75/25 wool/nylon
- 40/35/25 poly/acrylic/wool brushed fleece lining
- 2 button-closure chest pockets
- Button front
- Cut and sewn in the USA

Style 56220 | Sizes M-3XL
Suggested Retail **\$325-\$335**



73H
Forest Floor
Isle Royale Collection



AMERICAN
WOOLEN
COMPANY

THE WEEKEND PULLOVER

DETAILS

- 100% polyester printed fleece
- Coil zip front
- Cut and sewn in the USA

Style 52090 | Sizes M-3XL
Suggested Retail **\$120-\$130**



305
Red/Black Plaid

90E
Black/Gray Plaid

NEW

THE TAILGATE SWEATER

DETAILS

- 16 oz. ribbed sweater knit with fleece back (42% wool, 40% polyester, 15% nylon, 3% other recycled fibers)
- Center front placket with snap closure
- Large front kangaroo pocket
- Hood
- Cut and sewn in the USA

Style 53410 | Sizes M-3XL
Suggested Retail **\$200-\$210**



70C
Dark Navy

410
Hunter

BRANDED HOODIES

DETAILS

- 8 oz. soft-washed fleece
- 50/50 cotton/poly
- Front kangaroo pocket
- Hood with flat draw cords
- Stormy Kromer branding in back neck
- Imported, printed in the USA
- Not for sale outside of USA

Hoodie: Style 53110 | Sizes S-3XL
Suggested Retail **\$70 - \$80**



OEH
Buck Silhouette

OEJ
Buck Left Chest

BRANDED TEES

DETAILS

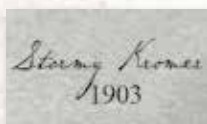
- 6 oz. 100% preshrunk cotton
- Stormy Kromer branding in back neck
- Imported, printed in the USA
- Not for sale outside of USA

Long Sleeve: Style 53100 | Sizes S-3XL
Suggested Retail **\$45 - \$50**

Short Sleeve: Style 53050 | Sizes S-3XL
Suggested Retail **\$35 - \$40**

LONG SLEEVE

SHORT SLEEVE



FRONT
LEFT
CHEST



BACK
LARGE
CENTER



OEM
American Classic

OEK
American Classic

OEN
Since 1903

OEL
Since 1903





STORMY
KROMER

WOMENS



THE PENINSULA PARKA

DETAILS

- 22 oz. 80/20 wool/nylon blend
- Berber lining in upper body
- Lamelite® 100% polyester continuous filament insulation lining in lower body and sleeves
- Wool blend knit inner cuff
- Multiple, functional pockets
- Storm flap with inner zipper
- Antique brass snaps
- Cut and sewn in the USA

Style 56390 | Sizes S-2XL

Suggested Retail **\$325**



98F
Black/Red Tartan

69A
Eclipse

032
Charcoal/White Tartan

NEW

THE CINDER COAT

DETAILS

- 22-24 oz. 85/15 wool/nylon blend (22F)
- 19-21 oz. 80/20 wool/nylon outer (929)
- 20 oz. 50/40/10 wool/polyester/recycled polymer blend (82M)
- Unlined
- Inseam side pockets
- Black-coppered snap closure
- Modern styling
- Cut and sewn in the USA

Style 56380 | Sizes S-2XL

Suggested Retail **\$225**



22F
Merlot

929
Brunswick

82M
Portobello

NEW

THE SWALLOWTAIL JACKET

DETAILS

- 22-24 oz. 85/15 or 80/20 wool/nylon blend (99H, 70J)
- 19-21 oz. 80/20 wool/nylon outer (30N)
- 20 oz. 50/40/10 wool/polyester/recycled polymer blend (017)
- Sherpa-lined body and hood
- Inseam side pockets
- Metal front zipper
- Dropped tail hem with knife pleat at center back
- Cut and sewn in the USA

Style 52170 | Sizes S-2XL

Suggested Retail **\$250**



99H
Plymouth

70J
Oxford

017
Metro

30N
Red/Black Plaid

NEW COLOR

NEW COLOR

THE LIGHTHOUSE JACKET

DETAILS

- 23 oz. 60/40 wool/polyester (22N)
- 20 oz. 30/70 wool/recycled yarns blend (89Q)
- 22 oz. 60/40 wool/recycled polymer double weave with fleece back (42P)
- Coil zipper
- Slight hi-low hem
- Inseam pockets
- Cut and sewn in the USA

Style 53470 | Sizes S-2XL

Suggested Retail **\$175**



22N
Garnet

89Q
Fawn

42P
Evergreen

THE SATURDAY PONCHO

NEW COLOR

DETAILS

- 20 oz. 30/70 wool/recycled yarns blend (89Q)
- 23 oz. 60/40 wool/polyester (22N)
- 20 oz. 50/40/10 wool/polyester/recycled polymer blend (017, 82M)
- Inseam patch pockets
- Hood
- Cut and sewn in the USA

Style 53480 | One Size

Suggested Retail **\$150**



89Q
Fawn

22N
Garnet

82M
Portobello

017
Metro



THE IDA OUTFITTER

DETAILS

- 22-24 oz. 85/15 or 80/20 wool/nylon blend
- 22 oz. 80/20 wool/recycled yarns blend (42N)
- Sturdy metal zip front
- Princess seams
- Three side pockets
- Unlined
- Leather branded label
- Cut and sewn in the USA

Style 52570 | Sizes S-2XL
Suggested Retail \$125



THE JOURNEY VEST

DETAILS

- 14.5 oz. ribbed sweater knit with fleece back (40% wool, 40% polyester, 18% nylon, 2% other recycled fibers)
- Princess seams
- Coil zipper
- Inseam pockets with coil zippers
- Cut and sewn in the USA

Style 53440 | Sizes S-2XL
Suggested Retail \$110

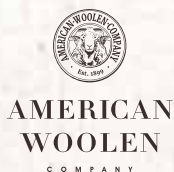


THE HARVEST VEST

DETAILS

- 20 oz. 100% wool made in Connecticut
- 18 oz. 92/8 polyester/spandex Polartec® Hardface®
- Coil zipper
- Inseam pockets
- Cut and sewn in the USA

Style 53450 | Sizes S-2XL
Suggested Retail \$130



THE WEEKENDER FLANNEL SHIRT

DETAILS

- 6.5 oz. 100% cotton
- 2 welt chest pockets
- Covered front placket
- Shirrtail hem
- Imported

Style 56230 | Sizes S-2XL

Suggested Retail **\$80**



222
Mulled Wine



607
Daybreak Plaid

THE BASE CAMP FLEECE

DETAILS

- 100% recycled polyester
- Vented and taped hem
- Set-in sleeves
- 10" front zipper
- 2" stand collar
- Cut and sewn in the USA

Style 56250 | Sizes S-2XL

Suggested Retail **\$115**



305
Red/Black Plaid



90E
Black/Gray Plaid



887
Ash

98K
Onyx

CAPS



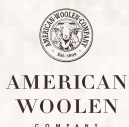
THE ORIGINAL STORMY KROMER CAP

DETAILS

- 22-24 oz. 85/15 or 80/20 wool/nylon blend
- 22 oz. 75/25 wool/nylon (73H)
- 50/25/25 wool/poly/nylon (84A)
- 22 oz. 80/20 wool/recycled yarns (78N)
- 100% cotton flannel lining
- Six-panel crown construction
- Pulldown earband
- Cut and sewn in the USA

Style 50010 | Sizes 6 1/2-8, varies by color
 Suggested Retail **\$48**, 73H **\$60**

NEW COLOR



73H
Forest Floor
Isle Royale Collection



305
Red/Black Plaid



90R
Adirondack Plaid



75K
Partridge Plaid



999
Black



901
Charcoal



90E
Black/Gray Plaid



78N
Century



84A
Ottawa



415
Olive

NEW COLOR



160
Blaze Orange



453
White Pine

THE MACKINAW CAP

DETAILS

- 26 oz. 100% wool made in Connecticut
- 100% cotton flannel lining
- Six-panel crown construction
- Pulldown earband
- Cut and sewn in the USA

Style 50070 | Sizes 6 7/8-8

Suggested Retail **\$55**



AMERICAN
WOOLEN
COMPANY



415
Olive



73E
North Star



305
Red/Black Plaid



901
Charcoal

THE ORIGINAL WITH LEATHER

NEW COLOR

DETAILS

- 22-24 oz. 85/15 wool/nylon blend (305)
- 22 oz. 80/20 wool/recycled yarns blend (929)
- Leather brim
- 100% cotton flannel lining
- Waxed cotton trim
- Six-panel crown construction
- Pulldown earband
- Cut and sewn in the USA

Style 51560 | Sizes 6 7/8-7 7/8

Suggested Retail **\$60**



305
Red/Black Plaid



929
Brunswick

THE MIDWAY CAP

DETAILS

- 22-24 oz. 85/15 or 80/20 wool/nylon blend
- 100% cotton flannel lining
- Six-panel crown construction
- Moderately lengthened, fleece-lined, pulldown earband
- Cut and sewn in the USA

Style 53360 | Sizes 6 7/8-7 7/8

Suggested Retail **\$50**



305
Red/Black Plaid



90R
Adirondack



901
Charcoal

THE WAXED COTTON CAP

DETAILS

- 10 oz. paraffin-treated 100% cotton duck
- 12 oz. waxed 100% cotton canvas (505)
- Polycotton lining
- Six-panel crown construction
- Pulldown earband
- Cut and sewn in the USA

Style 50420 | Sizes 6 7/8-8
Suggested Retail **\$48**



80Z
Dark Oak



75S
Sand



505
Treestand



C1M
Sand/Blaze Orange



160
Blaze Orange

THE INSULATED WAXED COTTON CAP

DETAILS

- 10 oz. paraffin-treated 100% cotton duck
- 100% nylon lining quilted with Lamalite® 100% polyester continuous filament fiber insulation in crown
- Six-panel crown construction
- Pulldown earband
- Cut and sewn in the USA

Style 51310 | Sizes 6 7/8-8
Suggested Retail **\$55**



80Z
Dark Oak



75S
Sand



C1M
Sand/Blaze Orange

THE WAXED RANCHER CAP

DETAILS

- 10 oz. paraffin-treated 100% cotton duck
- 12 oz. waxed 100% cotton canvas (505)
- 100% nylon lining quilted with Lamalite® 100% polyester continuous filament insulation in crown
- Lengthened, fleece-lined earband
- Six-panel crown construction
- Cut and sewn in the USA

Style 51490 | Sizes 6 7/8-8
Suggested Retail **\$60**



505
Treestand



75S
Sand



80Z
Dark Oak

THE MACKINAW RANCHER CAP

DETAILS

- 26 oz. 100% wool made in Connecticut - American Woolen
- 100% cotton flannel lining
- Thinsulate™ insulation
- 25oz. wool shearling lining on earband made in Connecticut - Draper Wool
- Six-panel crown construction
- Cut and Sewn in the USA



73E
North Star

415
Olive

Style 52790 | Sizes 6 7/8-7 7/8

Suggested Retail \$75



AMERICAN
WOOLEN
COMPANY

NEW

THE RANCHER CAP

DETAILS

- 22-24 oz. 85/15 or 80/20 wool/nylon blend
- 50/25/25 wool/poly/nylon (84A)
- 100% cotton flannel lining
- Thinsulate™ insulation
- Lengthened, fleece-lined earband
- Six-panel crown construction
- Cut and sewn in the USA



75K
Partridge Plaid



415
Olive



305
Red/Black Plaid



901
Charcoal



84A
Ottawa Camo



999
Black



160
Blaze Orange

Style 50500 | Sizes 6 7/8-8

Suggested Retail \$60

THE BERGLAND CAP

DETAILS

- 22-24 oz. 85/15 or 80/20 wool/nylon blend (90R)
- 18 oz. 60/30/10 wool/polyester/recycled polymer blend (78M)
- 16.5 oz. 60/30/5/5 wool/polyester/viscose/recycled polymer blend (42M)
- 100% cotton flannel lining
- 100% polyester sherpa-lined fold-down earflaps
- Antique brass snaps
- Cut and sewn in the USA



42M
Olive/Black Buffalo



90R
Adirondack Plaid



78M
Granite

Style 50660 | Sizes S-2XL

Suggested Retail \$55

THE STATE PRIDE CAP

DETAILS

- 22-24 oz. 85/15 wool/nylon blend
- 100% cotton flannel lining
- Six-panel crown construction
- Pulldown earband
- Choose from all 50 states (Michigan has the choice of full state or UP only)
- Cut and sewn in the USA

Style 51300 | Sizes 6 7/8-8

Suggested Retail **\$55**



305
Red/Black Plaid



901
Charcoal



999
Black

THE BRIMLESS CAP

DETAILS

- 22 oz. 80/20 wool/nylon blend
- 100% cotton flannel lining
- Six-panel crown construction
- Pulldown earband
- Cut and sewn in the USA

Style 50110 | Sizes 6 1/2-7 7/8

Suggested Retail **\$40**



999
Black



901
Charcoal

EMBROIDER YOUR STORE LOGO WITH US

DETAILS

- This program is for our wholesale dealers for your store logo only
- 36 piece minimum per style
- Pricing based on logo stitch count
- 4-6 week lead time

Contact your sales representative for more information on this program



THE MARSH CAP

DETAILS

- 10 oz. paraffin-treated 100% cotton duck
- 12 oz. waxed 100% cotton canvas (505)
- 40/35/20 polyester/acrylic/wool lined fold-down earflap (C57)
- 100% polyester fleece lined fold-down earflap (160, 505)
- 100% cotton flannel lining
- Cut and sewn in the USA

Style 51440 | Sizes S-2XL
Suggested Retail **\$55**



505
Treestand



160
Blaze Orange



C57
Sand/Hickory

THE BACKWOODS CRUISER

DETAILS

- 10 oz. paraffin-treated 100% cotton canvas
- 2 1/2" wide structured brim
- 4 mesh vented grommets for air flow
- Leather cord chin strap
- 100% cotton twill sweatband
- Cut and sewn in the USA

Style 53560 | Sizes S-XL
Suggested Retail **\$115**



80Z
Dark Oak

THE ADJUSTABLE CURVEBALL

DETAILS

- 14 oz. 85/15 wool/nylon wool (90K)
- 18 oz. 60/30/10 wool/polyester/recycled polymer blend (78M, 78L)
- 16.5 oz. 60/30/5/5 wool/polyester/viscose/recycled polymer blend (42M)
- Adjustable leather tab
- Metal clasp closure
- Unlined with taped seams
- Leather branded label
- Cut and sewn in the USA

Style 51460 | One Size
Suggested Retail **\$45**



90K
Dark Charcoal



78M
Granite



78L
Shadow



42M
Olive/Black Buffalo

THE FLANNEL ADJUSTABLE CURVEBALL

NEW COLOR

DETAILS

- 6.5 oz. 100% cotton flannel
- Adjustable leather tab
- Metal clasp closure
- Unlined with taped seams
- Leather branded label
- Cut and sewn in the USA

Style 52630 | One Size
Suggested Retail \$40



305
Red/Black Plaid



99C
Nickel

THE WAXED ADJUSTABLE CURVEBALL

DETAILS

- 8.75 oz. paraffin-treated 100% cotton duck
- Adjustable leather tab
- Metal clasp closure
- Unlined with taped seams
- Leather branded label
- Cut and sewn in the USA

Style 51680 | One Size
Suggested Retail \$45



415
Olive



901
Charcoal



288
Red/Black Buffalo Plaid



80Z
Dark Oak

THE EQUINOX CAP

DETAILS

- 22-24 oz. 85/15 or 80/20 wool/nylon blend
- 100% cotton flannel lining
- 100% polyester sherpa-lined fold-down earflaps
- Moderately lengthened earband
- Six-panel crown construction
- Cut and sewn in the USA

Style 52810 | Sizes 6 1/2-7 5/8
Suggested Retail \$50



032
Charcoal/White Tartan



98F
Black/Red Tartan



70J
Oxford



99H
Plymouth

NEW

THE SIDEKICK CAP

DETAILS

- 22-24 oz. 85/15 or 80/20 wool/nylon blend
- 20 oz. 30/70 wool/recycled yarns blend (89Q)
- 22 oz. 80/20 wool/recycled yarns blend (60T, 42N)
- 100% cotton lining
- Six-panel crown construction
- Pulldown earband
- Cut and sewn in the USA

Style 51450 | Sizes 6 1/2-7 5/8

Suggested Retail **\$48**



305
Red/Black Plaid



42N
Arbor



99G
Carbon



024
Winter White



60T
Cornflower



89Q
Fawn

THE PETAL PUSHER CAP

DETAILS

- 22-24 oz. 85/15 wool/nylon blend
- 14 oz. 85/15 wool/nylon blend (758)
- 20 oz. 50/40/10 wool/polyester/recycled polymer blend (017)
- 23 oz. 60/40 wool/polyester blend (22N)
- 100% cotton flannel lining
- Six-panel crown construction
- Pulldown earband
- Cut and sewn in the USA

Style 50360 | Sizes 6 1/2-7 5/8

Suggested Retail **\$50**



77S
Gull



C1P
Black/Charcoal



758
Cobblestone



22N
Garnet



017
Metro

THE BUTTON UP

NEW COLOR

DETAILS

- 22-24 oz. 85/15 or 80/20 wool/nylon blend
- 20 oz. 50/40/10 wool/polyester/recycled polymer blend (82M)
- 100% cotton flannel lining
- Six-panel crown construction
- Pulldown earband
- Cut and sewn in the USA

Style 50390 | Sizes 6 1/2-7 5/8

Suggested Retail **\$50**



99H
Plymouth



032
Charcoal/White Tartan



82M
Portobello



348
Plum Passion



70J
Oxford

THE MILLIE KROMER CAP

DETAILS

- 22-24 oz. 85/15 or 80/20 wool/nylon blend
- 22 oz. 80/20 wool/recycled yarns blend (42N, 60T)
- 100% cotton flannel lining
- Six-panel crown construction
- Pulldown earband
- Opening for ponytail
- Cut and sewn in the USA

Style 50650 | Sizes 6 1/2-7 5/8

Suggested Retail **\$50**



42N
Arbor



60T
Cornflower



98F
Black/Red Tartan



999
Black

THE IDA KROMER CAP

DETAILS

- 22-24 oz. 85/15 wool/nylon blend (92L)
- 22 oz. 80/20 wool/recycled yarns blend (929)
- 100% cotton flannel lining
- Six-panel crown construction
- Pulldown earband
- Cut and sewn in the USA

Style 50350 | Sizes 6 1/2-7 5/8

Suggested Retail **\$48**



929
Brunswick



92L
Fog

THE NORTHWOODS TRAPPER HAT

DETAILS

- 22-24 oz. 85/15 wool/nylon blend
- 100% nylon lining quilted with Lamilite®
- 100% polyester continuous filament fiber insulation in crown
- 80% acrylic/20% polyester faux rabbit fur lining and trim
- Antique brass snaps
- Six-panel crown construction
- Cut and sewn in the USA

Style 51210 | Sizes S-2XL

Suggested Retail **\$100**



999
Black

901
Charcoal

305
Red/Black Plaid

415
Olive

THE WOOL AVIATOR HAT

DETAILS

- 22-24 oz. 85/15 or 80/20 wool/nylon blend
- 25 oz. 100% merino wool shearling lining
- Adjustable under-chin strap with buckle
- Cut and sewn in the USA

Style 53370 | Sizes S-XL

Suggested Retail **\$65**

NEW COLOR



305
Red/Black Plaid



99G
Carbon

THE SNOWDRIFT CAP

DETAILS

- 22-24 oz. 85/15 or 80/20 wool/nylon blend
- 14 oz. 85/15 wool/nylon blend (90K)
- 18 oz. 60/30/10 wool/polyester/recycled polymer blend (78L)
- 100% nylon lining quilted with Lamalite® 100% polyester continuous filament fiber insulation
- 100% polyester sherpa-lined fold-down earflaps
- Six-panel crown construction
- Cut and sewn in the USA

Style 50670 | Sizes S-2XL

Suggested Retail **\$60**



92L
Fog



305
Red/Black Plaid



90K
Dark Charcoal



78L
Shadow



415
Olive

THE RAGWOOL POM

DETAILS

- 50% wool/50% recycled polyester with 100% acrylic lining
- Knit in the USA

Style 52820 | One Size

Suggested Retail **\$45**



901
Charcoal



885
Oatmeal

NEW

THE SK WATCH CAP

DETAILS

- 50% wool/50% recycled polyester with 100% acrylic lining
- Knit in the USA

Style 50580 | One Size

Suggested Retail **\$35**



91F
Smoke



901
Charcoal

THE WATCH CAP HEADBAND

DETAILS

- 50% wool/50% recycled polyester outer
- 100% polyester fleece lining
- Knit in the USA

Style 51270 | One Size

Suggested Retail **\$30**



91F
Smoke



901
Charcoal

THE SNOWFALL BEANIE

NEW COLOR

DETAILS

- 100% acrylic
- Beanie styling with cuff edge
- Faux fur pompom
- Suede brand label
- Knit in the USA

Style 52930 | One Size

Suggested Retail **\$35**



349
Grape



415
Olive



56M
Balsam

THE UTILITY BEANIE

DETAILS

- 100%, 2-ply worsted wool
- Military spec, beanie styling with cuff edge
- Knit in the USA

Style 51780 | One Size

Suggested Retail \$35



415
Olive

32F
Copper

THE SWEATER BEANIE

DETAILS

- 100% merino wool
- Cable knit beanie styling with cuff edge
- Suede brand label
- Made from traceable USA wool
- Knit in the USA

Style 51770 | One Size

Suggested Retail \$60



999
Black

THE FLEECE BEANIE

DETAILS

- 12 oz. knit blend, 42% polyester, 23% wool, 18% virgin wool, 8% nylon, 7% silk, 2% recycled fibers
- Cut and sewn in the USA

Style 53380 | Sizes S/M, L/XL

Suggested Retail \$25



536
Forest

92A
Dark Charcoal

THE ADVENTURE BEANIE

DETAILS

- 100% polyester printed fleece
- Cut and sewn in the USA

Style 52800 | S/M, L/XL

Suggested Retail **\$30**



305
Red/Black Plaid

90E
Black/Gray Plaid

NEW

THE IRON BELLE

DETAILS

- 22-24 oz. 80/20 wool/nylon blend (56E)
- 20 oz. 50/40/10 wool/polyester/recycled polymer blend (017)
- 23 oz. 60/40 wool/polyester (22N)
- 100% polyester twill lining
- Cut and sewn in the USA

Style 51340 | Sizes S-L

Suggested Retail **\$50**



017
Metro

56E
Blue Spruce

22N
Garnet

THE PLAID HEADBAND

DETAILS

- 22-24 oz. 85/15 or 80/20 wool/nylon blend
- 100% polyester fleece lining
- Hook and loop closure
- Fits sizes 6 ½ - 7 5/8
- Cut and sewn in the USA

Style 52970 | One Size

Suggested Retail **\$30**



90R
Adirondack Plaid

69A
Eclipse

032
Charcoal/White Tartan

305
Red/Black Plaid

ACCESSORIES



THE BUTTON UP NECK WARMER

DETAILS

- 22 oz. 80/20 wool/nylon blend
- 400 gsm polyester fleece lining
- Button closure
- Cut and sewn in the USA

Style 52720 | One Size

Suggested Retail \$30



98F
Black/Red Tartan

69A
Eclipse

032
Charcoal/White Tartan

NEW

THE WOOL OUTSIDER BANDANA

DETAILS

- 22-24 oz. 85/15 wool/nylon blend
- 17-19 oz. 80/20 wool/nylon blend (999)
- 50/25/25 wool/poly/nylon blend (84A)
- 400 gsm polyester fleece lining
- Hook and loop closure
- Cut and sewn in the USA

Style 52960 | One Size

Suggested Retail \$30



305
Red/Black Plaid

999
Black

84A
Ottawa

901
Charcoal

160
Blaze Orange

THE OUTSIDER BANDANA

NEW COLOR

NEW COLOR

NEW COLOR

DETAILS

- 100% cotton flannel
- 400 gsm polyester fleece lining
- Hook and loop closure
- Cut and sewn in the USA

Style 52940 | One Size

Suggested Retail \$25



222
Mulled Wine

89S
Bog

801
Chestnut

56X
Foliage

99C
Nickel

305
Red/Black Plaid

THE SNOWFALL SCARF

DETAILS

- 100% acrylic
- Suede brand label
- Knit in the USA

Style 51790 | One Size
Suggested Retail **\$40**

NEW COLOR

349
Grape



415
Olive

56M
Balsam

THE TAILGATE NECK WARMER

DETAILS

- 16 oz. ribbed sweater knit with fleece back (42% wool, 40% polyester, 15% nylon, 3% other recycled fibers)
- 15" tall tube
- Soft edge finishing
- Cut and sewn in the USA

Style 56270 | One Size
Suggested Retail **\$28**



70C
Dark Navy

410
Hunter

THE NECK WARMER

DETAILS

- 100% polyester fleece
- Cut and sewn in the USA

Style 52080 | One Size
Suggested Retail **\$25**



305
Red/Black Plaid

90E
Black/Gray Plaid

ALL LEATHER TOUGH MITTS

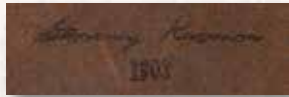
DETAILS

- Saddle leather from Minnesota - Siedel Leather
- 25oz. wool shearling lining made in Connecticut- Draper Wool
- Embossed Stormy Kromer signature
- Bound, clean-finish edge
- Cut and sewn in the USA

Style 52710 | Sizes S-XL
Suggested Retail **\$130**



81T
Dark Earth



NEW

TOUGH MITTS

DETAILS

- 22-24 oz. 85/15 wool/nylon blend
- Authentic goatskin palm (901, 415)
- Authentic saddle leather (C54)
- Authentic leather (C72)
- Polyester sherpa lining
- Cut and sewn in the USA

Style 51870 | Sizes S-XL
Suggested Retail **\$70**



901
Charcoal

415
Olive

C72
Black

C54
Navy

WAXED TOUGH MITTS

DETAILS

- 10 oz. paraffin-treated 100% waxed cotton
- Authentic goatskin palm (80Z)
- Authentic saddle leather (C55, C67)
- Polyester sherpa lining
- Cut and sewn in the USA

Style 51840 | Sizes S-XL
Suggested Retail **\$70**



C67
Sand

80Z
Dark Oak

C55
Charcoal

IDA'S MITTENS

DETAILS

- 22-24 oz. 85/15 or 80/20 wool/nylon blend
- Authentic goatskin strip on palm
- Authentic saddle leather (C56, 758)
- Soft polyester sherpa lining
- Cut and sewn in the USA

Style 51890 | Sizes M-XL

Suggested Retail **\$60**



THE WOOL BLANKET

DETAILS

- 50" x 72"
- 19-21 oz. 80/20 wool/nylon blend
- Blanket stitching on edge
- Leather branded label
- Cut and sewn in the USA

Style 53010 | One Size

Suggested Retail **\$150**



WAXED POUCH

DETAILS

- Small: 8" x 3.5" x 5" • Medium: 11" x 4" x 5.5"
- Large: 13" x 4" x 7"
- 10 oz. paraffin-treated 100% cotton duck
- 6.75 oz. paraffin-treated 100% cotton duck (288)
- Molded plastic continuous zipper
- Unlined with taped seams
- Leather branded label
- Cut and sewn in the USA

Style 56010 | Sizes Sm, Med, Lg

Suggested Retail **\$20, \$25, \$30**



WOOL POUCH

DETAILS

- Small: 8" x 3.5" x 5" • Medium: 11" x 4" x 5.5"
- Large: 13" x 4" x 7"
- 22 oz. 85/15 wool/nylon blend
- Molded plastic continuous zipper
- Unlined
- Leather branded label
- Cut and sewn in the USA

Style 56260 | Sizes Sm, Med, Lg

Suggested Retail **\$20, \$25, \$30**



305
Red/Black Plaid



99G
Carbon

THE MAIN STREET CLUTCH

DETAILS

- 7.5" x 2" x 6.5"
- 23 oz. 60/40 wool/polyester (22N)
- 20 oz. 50/40/10 wool/polyester/recycled polymer blend (017, 82M)
- 100% cotton twill lining
- 100% nylon webbing strap
- Leather branded label
- Cut and sewn in the USA

Style 56180 | One Size

Suggested Retail **\$45**

22N
Garnet



017
Metro



82M
Portobello



THE WOOL NORTHWOODS WRISTLET

DETAILS

- 7.5" x 5"
- 22 oz. 80/20 wool/nylon
- Polycotton broadcloth lining
- Wrist strap
- Zippered outside pocket
- Leather branded label
- Cut and sewn in the USA

Style 56130 | One Size

Suggested Retail **\$45**

348
Plum Passion



69A
Eclipse



98F
Black/Red Tartan



032
Charcoal/White Tartan



2024 SK CAP PIN

DETAILS

- 1.5" wide (300)
- 1" round (999)
- Metal with enamel
- Butterfly clutch
- Made in the USA

Style 55020 | One Size
Suggested Retail \$8



300
Fire Pin 2024



999
Round Black

THE PETAL PACK

DETAILS

- 22-24 oz. 85/15 or 80/20 wool/nylon blend or 100% wool felt
- Cut and sewn in the USA

Style 54510 | One Size
Suggested Retail \$13



Suggested use
with Sidekick



C59
Jewels

C60
Traditional Plaid

C58
Neutrals

THE SK KEY FOB

DETAILS

- 22-24 oz. 80/20 wool/nylon blend
- Antique brass hardware
- Available in 4" and 6" lengths
- Cut and sewn in the USA

Style 54890 | Sizes 4", 6"
Suggested Retail 4"-\$8, 6"-\$10



305
Red/Black Plaid

KROMER WOOL CAN WRAPS

DETAILS

- 22-24 oz. 85/15 or 80/20 wool/nylon blend
- 50/25/25 wool/poly/nylon (84A)
- Fits cans and bottles
- Cut and sewn in the USA

Regular 53950 | Slim 53920

Suggested Retail \$9



75K



305



90R



032



305



84A



160



282

KROMER WAXED CAN WRAPS

DETAILS

- 10 oz. paraffin-treated 100% cotton
- Fits cans and bottles
- Cut and sewn in the USA

Regular 53940 | Slim 53910

Suggested Retail \$9



591



288



415



591



288



75S



160



KIDS



THE LIL' KROMER

DETAILS

- 22-24 oz. 85/15 or 80/20 wool/nylon blend
- 50/25/25 wool/poly/nylon (84A)
- 100% cotton flannel lining
- Six-panel crown construction
- Pulldown earband
- Cut and sewn in the USA

Style 50220 | Sizes S-XL
Suggested Retail **\$37**



75K
Partridge



700
Navy



84A
Ottawa



305
Red/Black Plaid



901
Charcoal

THE LIL' PETAL PUSHER

NEW COLOR

DETAILS

- 22-24 oz. 80/20 wool/nylon blend
- 22 oz. 80/20 wool/recycled yarns blend (42N)
- 20 oz. 30/70 wool/recycled yarns blend (89Q)
- 100% cotton flannel lining
- Six-panel crown construction
- Pulldown earband
- Cut and sewn in the USA

Style 51200 | Sizes S-XL
Suggested Retail **\$37**



98F
Black/Red Tartan



42N
Arbor



348
Plum Passion



89Q
Fawn

THE KIT AVIATOR

DETAILS

- 100% polyester fleece
- 100% polyester sherpa lining
- Cut and sewn in the USA

Style 56290 | Sizes S-XL
Suggested Retail **\$35**



90E
Black/Gray Plaid



305
Red/Black Plaid

THE KIT TRAPPER HAT

NEW COLOR

DETAILS

- 6.5 oz. 100% cotton flannel outer
- 7 oz. 65/35 polycotton twill outer (847)
- 100% polyester fleece lining
- Cut and sewn in the USA

Style 53390 | Sizes S-XL

Suggested Retail **\$35**



222
Mulled Wine



847
Woodland Camo

305
Red/Black Plaid

THE KIDS NECK WARMER

DETAILS

- 100% polyester fleece
- Cut and sewn in the USA

Style 51810 | One Size

Suggested Retail **\$15**



90E
Black/Gray Plaid



305
Red/Black Plaid

THE KIDS MITTS

NEW COLOR

DETAILS

- 22-24 oz. 85/15 or 80/20 wool/nylon blend
- Polyester sherpa lining
- 10 oz. paraffin-treated 100% waxed cotton palms
- Cut and sewn in the USA

Style 51830 | Sizes S-L

Suggested Retail **\$40**



98F
Black/Red Tartan

305
Red/Black Plaid

999
Black

348
Plum Passion

901
Charcoal

PET



CRITTER KROMER

DETAILS

- Fleece - 100% polyester fleece (305, 90E)
- Soft Shell - Dintex fleece-back soft shell, waterproof-breathable and windproof (162)
- Waxed - 12 oz. waxed 100% cotton canvas (C73)
- Adjustable paracord strap
- Cut and sewn in the USA

Style 54800 | Sizes S-L
Suggested Retail \$37

C73
Treestand/
Blaze Orange



305
Red/Black Plaid



90E
Black/Gray Plaid



162
Blaze Orange

THE SK DOG JACKET FLEECE

DETAILS

- 100% polyester fleece; unlined
- Hook and loop straps under collar and neck
- Opening at collar for leash
- Cut and sewn in the USA

Style 54810 | Sizes S-XL
Suggested Retail \$45



305
Red/Black Plaid



90E
Black/Gray Plaid

THE SK DOG JACKET WAXED

DETAILS

- 6.3 oz. paraffin-treated 100% cotton with 100% cotton flannel lining
- 12 oz. waxed 100% cotton canvas with 100% polyester fleece lining (505)
- Hook and loop straps under collar and neck
- Opening at collar for leash
- Cut and sewn in the USA

Style 54830 | Sizes S-XL
Suggested Retail \$60

505
Treestand



76U
Dark Tan

160
Blaze Orange

288
Red/Black Buffalo

THE SK DOG JACKET SOFT SHELL

DETAILS

- Dintex fleece-back soft shell, waterproof-breathable and windproof
- 2" wide reflective stripe across back
- Cut and sewn in the USA

Style 54620 | Sizes S-XL

Suggested Retail **\$50**

NEW COLOR



700
Navy

NEW COLOR



415
Olive



300
Red



162
Blaze Orange

THE CANVAS DOG JACKET

DETAILS

- 14 oz., water-resistant cotton duck
- Treated with durable water repellent (DWR)
- Unlined
- Red stitching on black binding
- Durable, abrasion resistant fabric
- Hook and Loop straps under collar and neck
- Opening at collar for leash
- Cut and sewn in the USA

Style 55140 | Sizes S-XL

Suggested Retail **\$50**



74L
Harvest Tan

THE SK PET BANDANA

DETAILS

- 100% cotton flannel
- Cut and sewn in the USA

Style 54820 | Sizes S-L

Suggested Retail **\$20**



305
Red/Black Plaid

NEW COLOR



80I
Chestnut

NEW COLOR



89S
Bog



40K
Juniper



56X
Foliage



99C
Nickel

THE FURRY FRIEND SHIRT COLLAR

DETAILS

- 100% cotton flannel
- 2 antique brass snaps for adjustability
- Cut and sewn in the USA

Style 54590 | Sizes S-L

Suggested Retail \$25

NEW COLOR

NEW COLOR



80I
Chestnut



89S
Bog



305
Red/Black Plaid



56X
Foliage



99C
Nickel



40K
Juniper

THE PET COLLAR

DETAILS

- 100% nylon webbing with Stormy Kromer exclusive plaid pattern
- Medium: 12"-20"; Large: 16"-28"
- Leather branded label
- Made in the USA

Style 54630 | Sizes M-L

Suggested Retail \$30



305
Red/Black Plaid

THE PET LEASH

DETAILS

- 100% nylon webbing with Stormy Kromer exclusive plaid pattern
- 6 foot length
- Leather branded label
- Made in the USA

Style 54640 | One Size

Suggested Retail \$35



305
Red/Black Plaid

2024 MERCHANDISING PROGRAM

FREESTANDING CAP DISPLAY

- Holds between 72-96 caps using both sides.
- Uses pegs with newly designed cap hanger.
- Dimensions 16" x 24" x 65"
- *Requires a minimum \$3000 preseason order*

Item # 54110-002022-000-000



2024 FREE CAP PROMOTION

Our Free Cap Promotion provides one free cap for sales personnel who sell 12 or more caps in a calendar year. To qualify for the promotion, sales personnel should track their progress using Stormy Kromer's form and have their manager sign off on customer purchases. Contact your Sales Rep for more details on this program.

OTHER SUPPORT

Have another marketing or merchandising need or idea? Contact your Sales Representative to see how Stormy Kromer can support your efforts.

Don't know who to contact for Stormy Kromer? Call SK Customer Service and they will help you connect with your rep at 888-455-2253.

VINYL BANNER

**STORMY[®]
KROMER**

- 36" x 17"
- Any dealer can request.
- *No Charge*

Item #54200-360170-000-24A

APPAREL RACK TOPPER

- 11" x 7" cardholder
- Double-sided branded card included
- Choice of magnetic or flat base
- *Requires a minimum \$750 apparel preseason order*



MAGNETIC BASE - Item #59990-110070-000-24A



FLAT BASE - Item #59980-110070-000-24A

SIZING HELP

Stormy Kromer Caps

Most of our caps are sized by number - 7, 7 1/4, 7 3/8, etc. Your hat size is determined by measuring around your head in inches and dividing by pi (3.14).

If you're unsure of what cap sizes to purchase for your store, we recommend the following breakdowns per dozen for men and women:

SIZE RUN

QUANTITY	1	2	3	3	2	1
MEN	7 1/8	7 1/4	7 3/8	7 1/2	7 5/8	7 3/4
WOMEN	6 7/8	7	7 1/8	7 1/4	7 3/8	7 1/2

Note: The most popular men's size is 7 3/8; the most popular women's size is 7 1/8.

SPECIAL CAP SIZING

HAT SIZE	6 7/8	7	7 1/8	7 1/4	7 3/8	7 1/2	7 5/8	7 3/4
BERGLAND CAP AVIATOR HAT SNOWDRIFT CAP MARSH CAP BACKWOODS CRUISER	Small		Medium		Large		X-Large	

HAT SIZE	6 7/8	7	7 1/8	7 1/4	7 3/8	7 1/2	7 5/8	7 3/4	7 7/8
IRON BELLE	Small			Medium			Large		

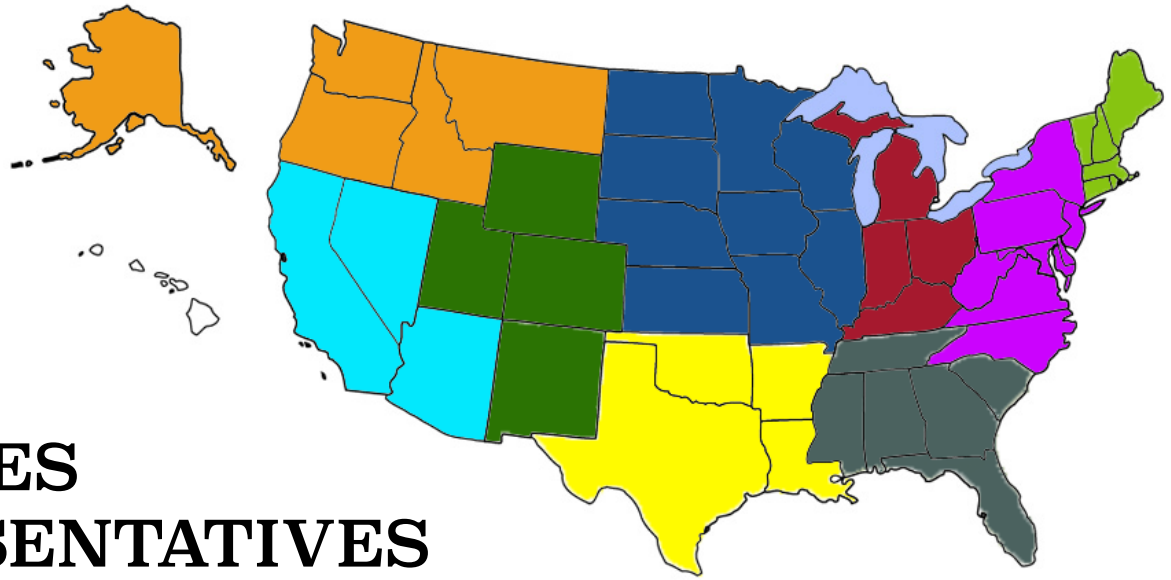
KID'S CAPS

SIZING	IN"	HAT SIZE
S	16	5 1/8
M	18	5 3/4
L	19 1/2	6 1/4
XL	21 1/8	6 3/4

MITTENS (Measured in inches around the widest part of your hand.)

SIZE	TOUGH MITTS	IDA'S MITTENS	KIDS MITTENS
S	7 1/2	NA	5 1/2
M	8	7	6
L	9	7 1/2	6 1/2
XL	10	8	NA

Note: The most popular size for Tough Mitts is large; the most popular in Ida's Mittens is medium.



SK SALES REPRESENTATIVES

NY, PA, NJ, DE, MD, DC, VA, WV, NC

The PGA Group
Ralph Viola
M: 609-458-7900
ralph@thepgagroup.com

Janet Quintero Hunter
M: 570-460-7983
janetq4@ptd.net

AK, WA, OR, ID, MT

Western Sports & Leisure
Art Simpson
M: 503-957-0467
wslsales@comcast.net

Jad Simpson
M: 503-957-0129
wslsales@comcast.net

Don Sneyd
M: 509-990-8405
rooseveltoutdoors@yahoo.com

CO, UT, WY, NM

Stephen Sramek
M: 801-647-2486
sales@zephoutdoor.com

CA, NV, AZ

Alpine Sports
Tom Lane
M: 530-412-2648
alpinemports.lane@gmail.com

MI, IN, OH, KY

Lifestyle Group
Doug Vogelzang
M: 616-283-0294
doug.vogelzang@gmail.com

Tim Vogelzang
M: 616-902-3693
tim.vogelzang.rep@gmail.com

ME, VT, NH, MA, CT, RI

Internal Sales
Lauren DouBrava
Office: 888-455-2253 ext.1135
ldoubrava@stormykromer.com

TX, OK, AR, LA

Outdoor Outfitters Group Inc.
Dennis O'Dell
M: 913-558-9034
DODell.00G@gmail.com

Todd Giesbrecht (South TX)
M: 281-468-1999
TGies.00G@gmail.com

Luke Berger (AR and LA)
M: 479-903-4642
LBerger.00G@gmail.com

Gage Berger (OK and North TX)
M: 501-358-2715
GBerger.00G@gmail.com

WI, MN, IL, IA, ND, SD, NE, KS, MO

Midwest Outdoor Sales
Jeff Reimann
M: 612-910-6585
jeff@midwestoutdoorsales.com

Emily Rach
M: 920-284-8354
emily@midwestoutdoorsales.com

Rafe McAnally
M: 608-860-5380
rafe@midwestoutdoorsales.com

Katie Vinogradsky
M: 262-957-0336
katie@midwestoutdoorsales.com

Nicole Danielson
M: 608-294-7194
nicole@midwestoutdoorsales.com

TN, GA, AL, SC, MS, FL

Internal Sales
Karen Palmquist
Office: 888-455-2253 ext.1114
kpalmquist@stormykromer.com

**STORMY
KROMER**

Don't know who to contact for Stormy Kromer? Email or call Stormy Kromer Customer Service and they will help you connect with your rep. Email info@stormykromer.com or call 888-455-2253.

www.stormykromer.com
Toll Free: 888-455-2253